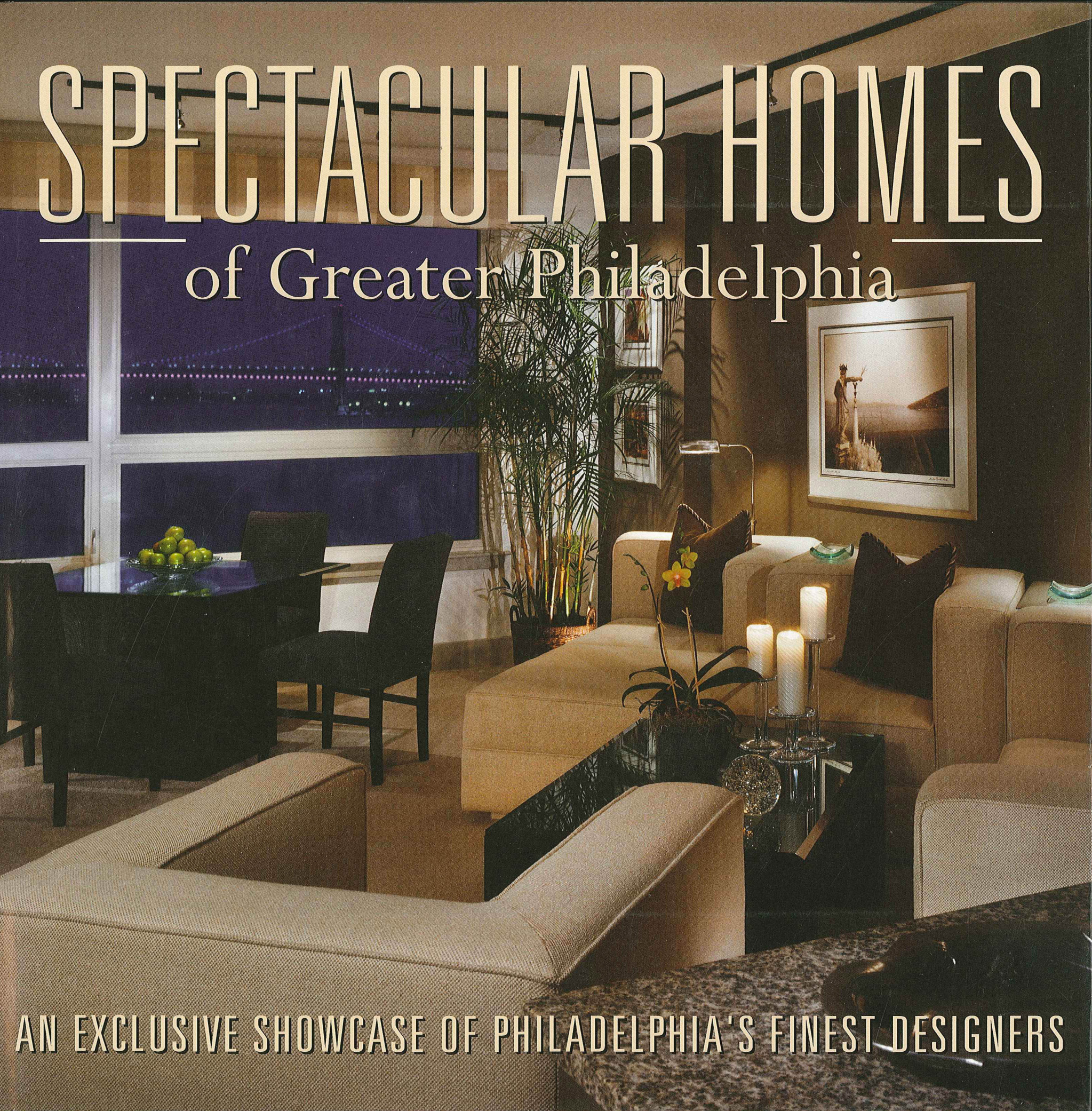


SPECTACULAR HOMES

of Greater Philadelphia

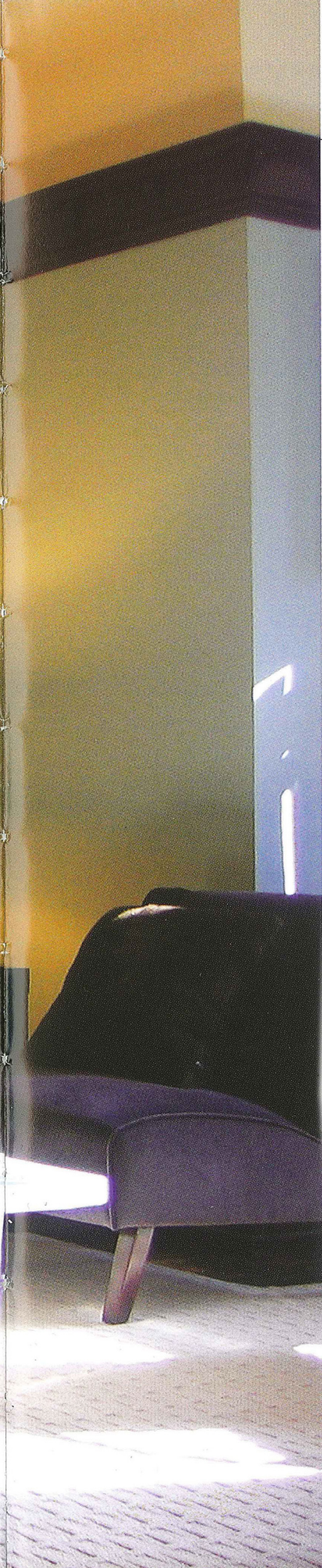


AN EXCLUSIVE SHOWCASE OF PHILADELPHIA'S FINEST DESIGNERS



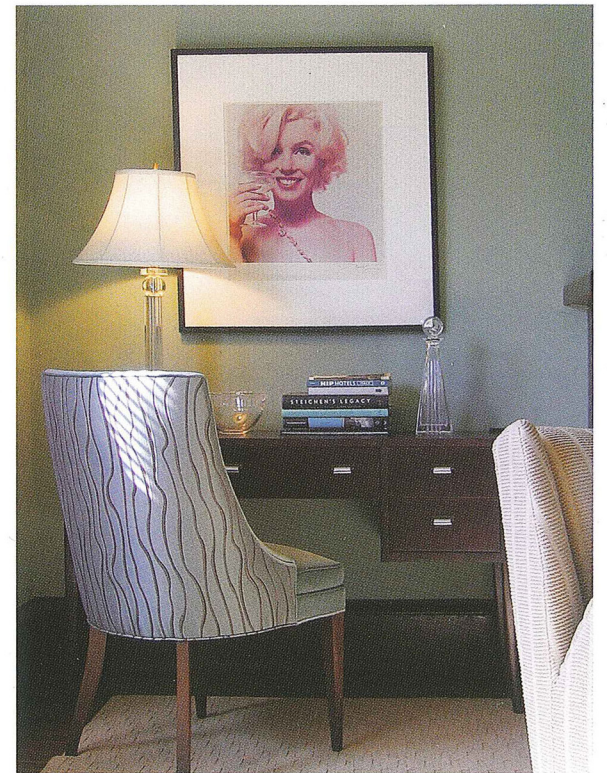
GREG BERZINSKY

BERZINSKY ARCHITECTS



Greg Berzinsky was fascinated by TV sets as a child and would draw them with great precision and accuracy. Today, his architectural renderings, works of art in and of themselves, are in demand by large firms that commission them for publication in newspapers such as *The Philadelphia Inquirer* and *The New York Times*.

A graduate of the Pennsylvania State University with a bachelor of architecture, Berzinsky opened his own firm 16 years ago, with four on staff after working for larger architectural firms. Specializing in renovations, additions and interior design, he keeps his hand in hospitality design by consulting for DAS Architects working on Bliss, a hot Broad Street eatery, and the redo of the Philadelphia institution, Le Bec Fin. His latest collaboration, with Banik Cumby Inc., was the revamping of the prestigious, historic Union League, which involved designing millwork and period plaster details, and face-lifting other aspects of the Heritage Room, the Cigar Room, and the Old Café.



ABOVE

A Bert Stern photograph of Marilyn Monroe watches over a walnut writing table. Desk chair is upholstered in a grey blue silk from Bert Stern.

LEFT

A painting by Gustave Cimiotti hangs above a group of custom furniture by the architect for this town house living room. Sofa fabric by Rodolph. The white lacquered Nelson platform bench sits in contrast to the living room's dark walnut woodwork and slate blue walls.



But Greg's love, along with interior designer Mary Ryan Berzinsky, is a space that can combine modern with traditional. Custom kitchens with one-of-a-kind cabinetry are also a forte. For one Center City brownstone, he made a low, modern kitchen to set off the elaborate period moldings of the existing space. Berzinsky often rebuilds furniture that clients have—making a traditional piece more streamlined or changing its height so it is in better scale with the room's proportions.

Many times they are called upon to gut a Center City townhouse and to add a floor to what is there, or to change a carriage house into a guest house or office. They have built homes from scratch in the South and transformed older Main Line manses into ones that function better for young families who want to cook, entertain and spend time in a room that is more modern in concept—the family room. He likes the challenge of working with existing spaces, especially older homes, sometimes doing contemporary additions or ones that look like they have always been there.



TOP LEFT

The base cabinet only scheme for this mezzanine kitchen sets off the restored ornate plaster crown. Low under-counter refrigeration and storage direct attention up to the architectural features and down into the living spaces below.

BOTTOM LEFT

Abundant and simple cabinets in this elegantly symmetrical kitchen provide ample storage. The massive granite-top island serves multiple functions, providing storage, an extra sink, plenty of counter space and places to sit.

More About Greg

WHAT PERSONAL INDULGENCE DO YOU SPEND THE MOST MONEY ON?

Collecting art, especially by Philadelphia artists. I like Chris LaFuente, John Redmond, Jesse Gardener, Mark Bullen, and Alex Kanevsky.

WHAT IS THE BEST PART OF BEING AN ARCHITECT AND DESIGNER?

Every project is new and different. I like the initial conceptual phase when you are presenting the initial scheme to a client, seeing the excitement in their eyes, as well as going into the field to see the job progressing.

WHAT IS THE HIGHEST COMPLIMENT YOU HAVE RECEIVED PROFESSIONALLY?

"I didn't know I wanted this, but it is exactly what I want. You read my mind."

WHAT ONE ELEMENT OF STYLE OR PHILOSOPHY HAVE YOU STUCK WITH FOR YEARS THAT STILL WORKS FOR YOU TODAY?

We can rebuild it. We don't assume that everything "has to go."

IF YOU COULD ELIMINATE ONE ARCHITECTURAL TECHNIQUE OR STYLE FROM THE WORLD, WHAT WOULD IT BE?

Spec housing.

WHAT IS THE SINGLE THING YOU WOULD DO TO BRING A DULL HOUSE TO LIFE?

Throw a party with interesting people.

Berzinsky Architects

Greg Berzinsky, AIA
923 South 46th Street
Philadelphia, PA 19143-3701
215.387.6636
www.berzinsky.com



ABOVE
A custom hanging vanity of wenge with matching mirror and storage accentuates the bathroom alcove of this Center City residence. Glass mosaic tiles by Bisazza.

Spectacular Homes of Greater Philadelphia

Over 250 photographs of the work of over 40 leading interior designers in Center City Philadelphia, The Main Line, Bucks County and Chester County.

ISBN: 1-933415-24-X / 978-1-933415-24-6

Price \$39.95

Page Count: 216

[View Featured Designers](#)

[Order Now](#)

